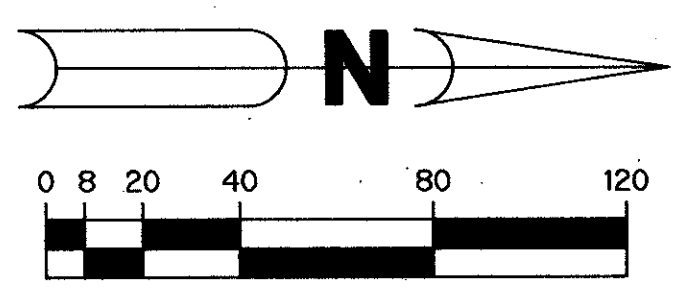


(A P.U.D.)

# RAINBOW LAKES - TRACT "A"

A REPLAT OF A PORTION OF TRACT "A" ACCORDING TO THE PLAT OF TARTAN LAKES PLAT NO. 3<sup>RD</sup> - P.U.D. AS RECORDED IN PLAT BOOK 51, PAGES 170 THROUGH 174 INCLUSIVE, OF THE PUBLIC RECORDS OF PALM BEACH COUNTY, FLORIDA. SECTIONS 14 AND 23, TOWNSHIP 45 SOUTH, RANGE 42 EAST

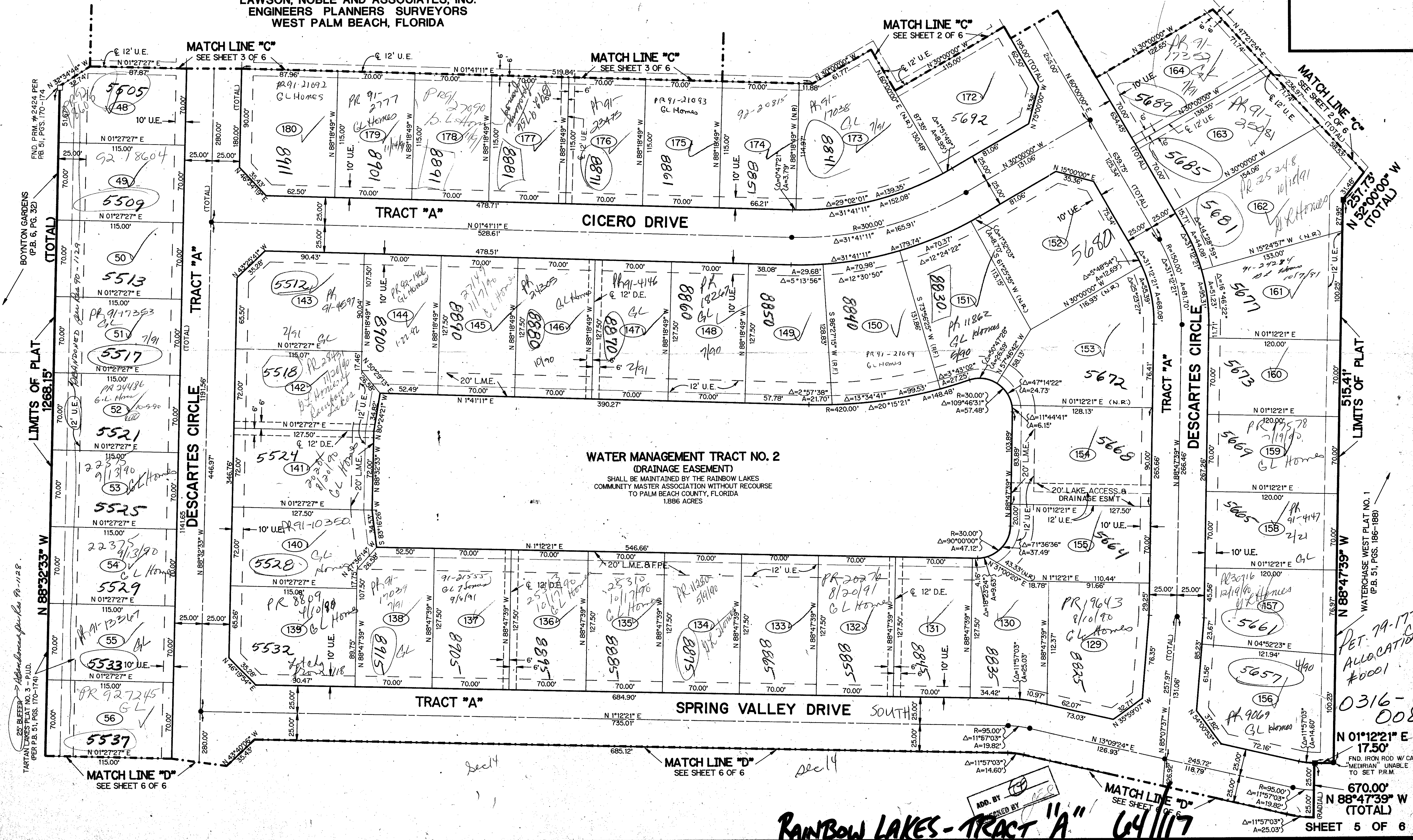
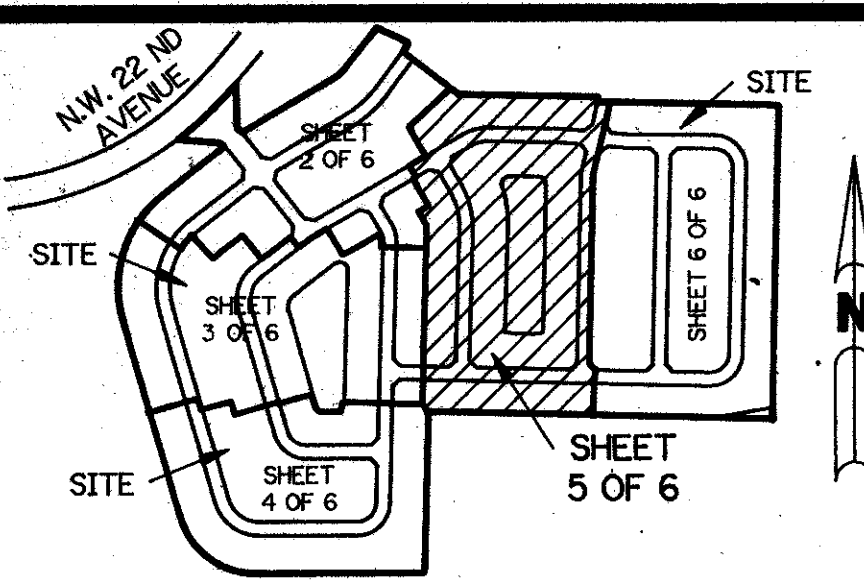


SHEET 5 OF 6

MAY, 1989

THIS INSTRUMENT PREPARED BY  
PERRY C. WHITE P.L.S. 4213 STATE OF FLORIDA  
LAWSON, NOBLE AND ASSOCIATES, INC.  
ENGINEERS PLANNERS SURVEYORS  
WEST PALM BEACH, FLORIDA

KEY MAP  
N.T.S.



SUBDIVISION: Rainbow Lakes, Sheet 117  
BLOCK: 64 PAGE 119  
FLOOD HAZARD MAP: 1968  
QUAD: 14-34  
ZONING: RTS  
33 79-177  
41/23/45/172  
FILE NAME: Rainbow Lakes, Sheet 117 (Camp) TAZ 441

WATERCHARGE WEST PLAT NO. 1  
(P.B. 51, PGS. 186-188)

PET. 79-177  
ALLOCATION  
#0001

0316-008

N 01°12'21" E  
17.50'

670.00' W  
N 88°47'39" W  
(TOTAL)  
SHEET 5 OF 6

## RAINBOW LAKES - TRACT "A"

64/117